



# Welcome to London

*Patrick Allcorn*

*Travel Plan Manager*

*Transport for London*



# Changing the way we think



**Changing the way we think**

**As professionals**



# **Changing the way we think**

**As professionals**

**As individuals**



# Changing the way we think

**As professionals**

**As individuals**

**As communities**



# Introduction

- **London Context**
- **The 'TDM' mix**
- **Taking it seriously**
- **Enhancing the product**
- **Hitting the spot**
- **Challenges**



# Context

- **Megacity**
- **Population growth 800,000 between 2003 -2016**
- **Employment growth 500,000**
- **Traffic growth 5% 1993 – 2003**
- **Congestion on all modes of motorised transport**



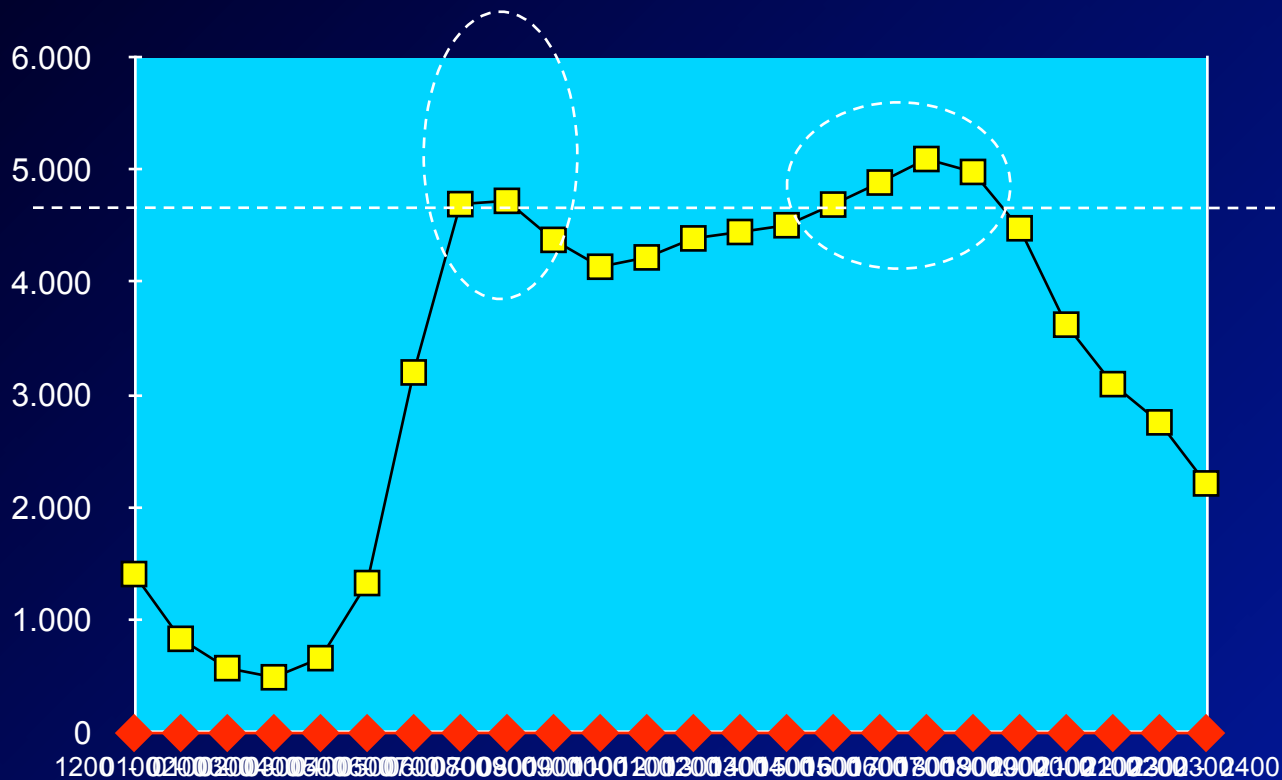
# Context

- **Mayor of London**
  - Transport strategy
  - Land Use strategy
  - Environmental strategies
- **33 Local Authorities**
  - Highway authority
  - Planning authority
  - Education Authority



# Gridlock is coming

•Weekday  
vehicle-  
km's  
(millions)

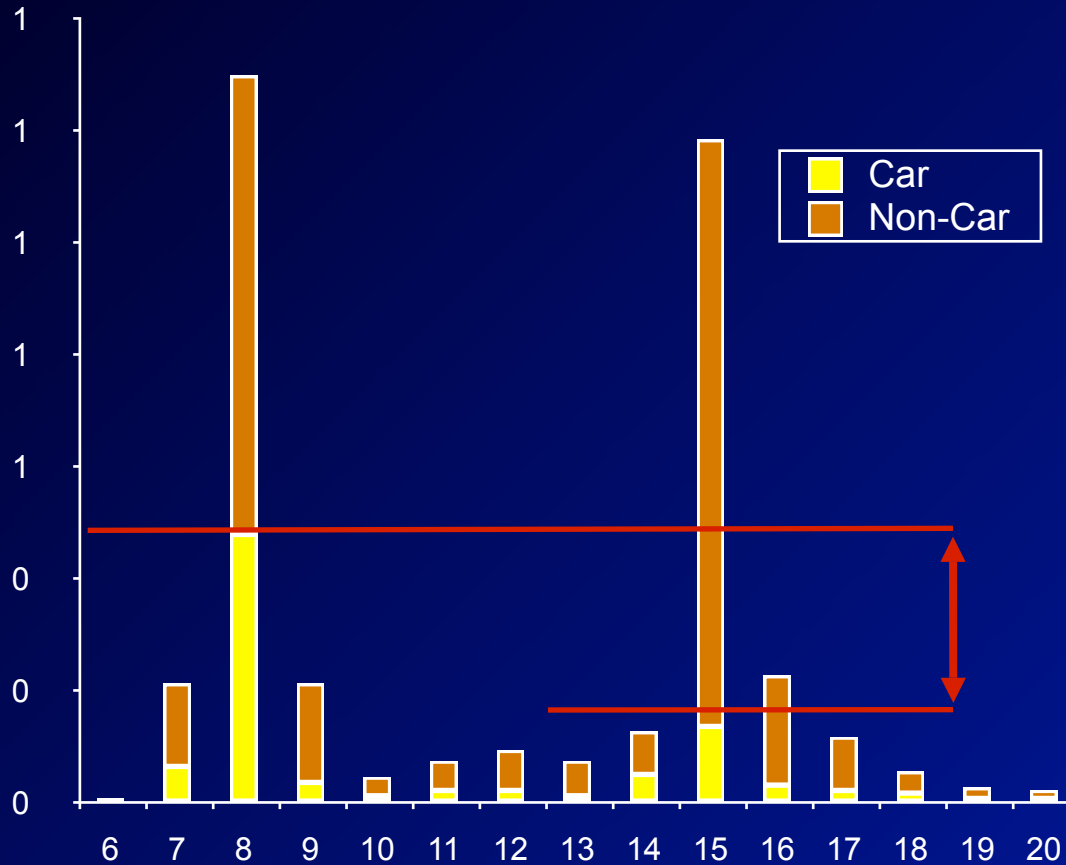


•Delay  
(minutes  
per km)



# But there is hope

•School run trips per day  
•(millions)



**0.34 Million Trips**

Source: LATS 2001

•Schools trips per hour in London for typical week day during term



# Using all Our tools



# Traditionally

- **Capacity**
  - West London Tram
  - Thames Gateway Bridge
- **Renewal**
  - Bendy Buses
  - Maintenance
- **Efficiency**
  - Signalling



# Land use Planning

**Sustainable Development**

**Mixed Use**

**Density**

**Conflicts**



# Land use Planning

## Barking Riverside

- 10,800 homes

## Greenwich Peninsula

- 10,000 homes
- 20,000 Jobs
- 20,000 Stadium

## Kings Cross

## Wembley

## Stratford City



# Hard Travel Demand management

**Congestion Charging**

**Parking**

**Low emission zones**



# With the right tools

- **Travel Awareness**
  - Perception
  - Benefits
  - Acceptance
  - Trial
  - Change



# With the right tools

- **Travel Awareness**
  - Perception
  - Benefits
  - Acceptance
  - Trial
  - Change



# With the right partners

- **NHS**
- **Sport England**
- **Metropolitan Police**
- **Unions**
- **Business Groups**
- **Politicians**



# Work Place travel Plans

- **Development Control**
  - Legislation
  - Support
  - Penalties
- **Voluntary Take up**
  - Support
- **Monitoring**
  - Standardisation



# School Travel Plans

- **Surveys**
- **Actions**
- **Curriculum**
- **Training**



# Residential Travel Plans

- **Developments**
  - New modes
  - Facilities
  - Awareness
  - Incentives
  - Opportunities
- **Existing**
  - Contact
  - Information
  - Incentives
  - Opportunities

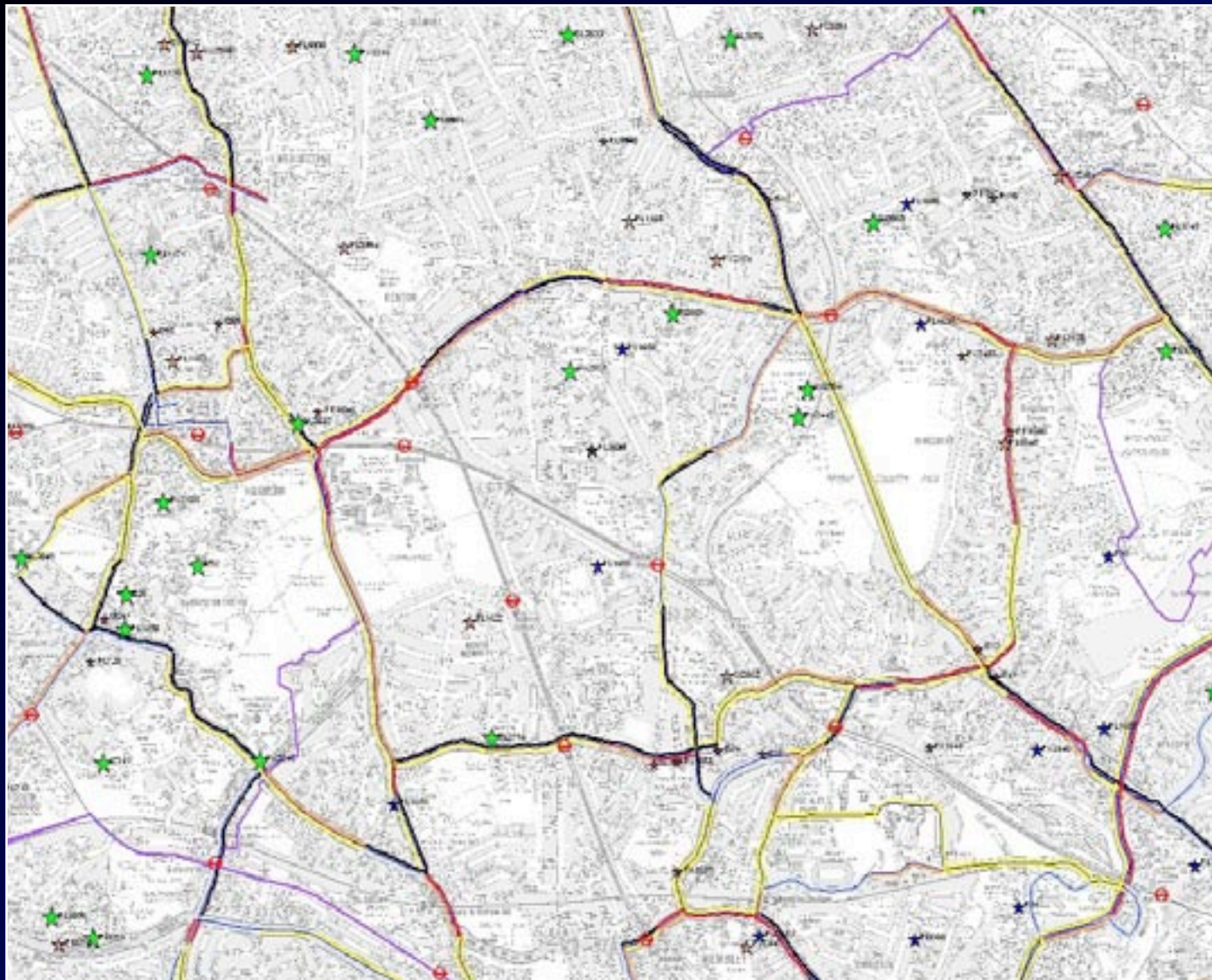


# Sustainable Town Centre

- **Sept 2006 launch**
- **All programmes**
- **Integration**
- **Addition**



# And we target the key places



## School Ranking

- ★ High
- ★ Medium
- ★ Low
- ★ STP 2005

## Delay Measurement (mins per km)

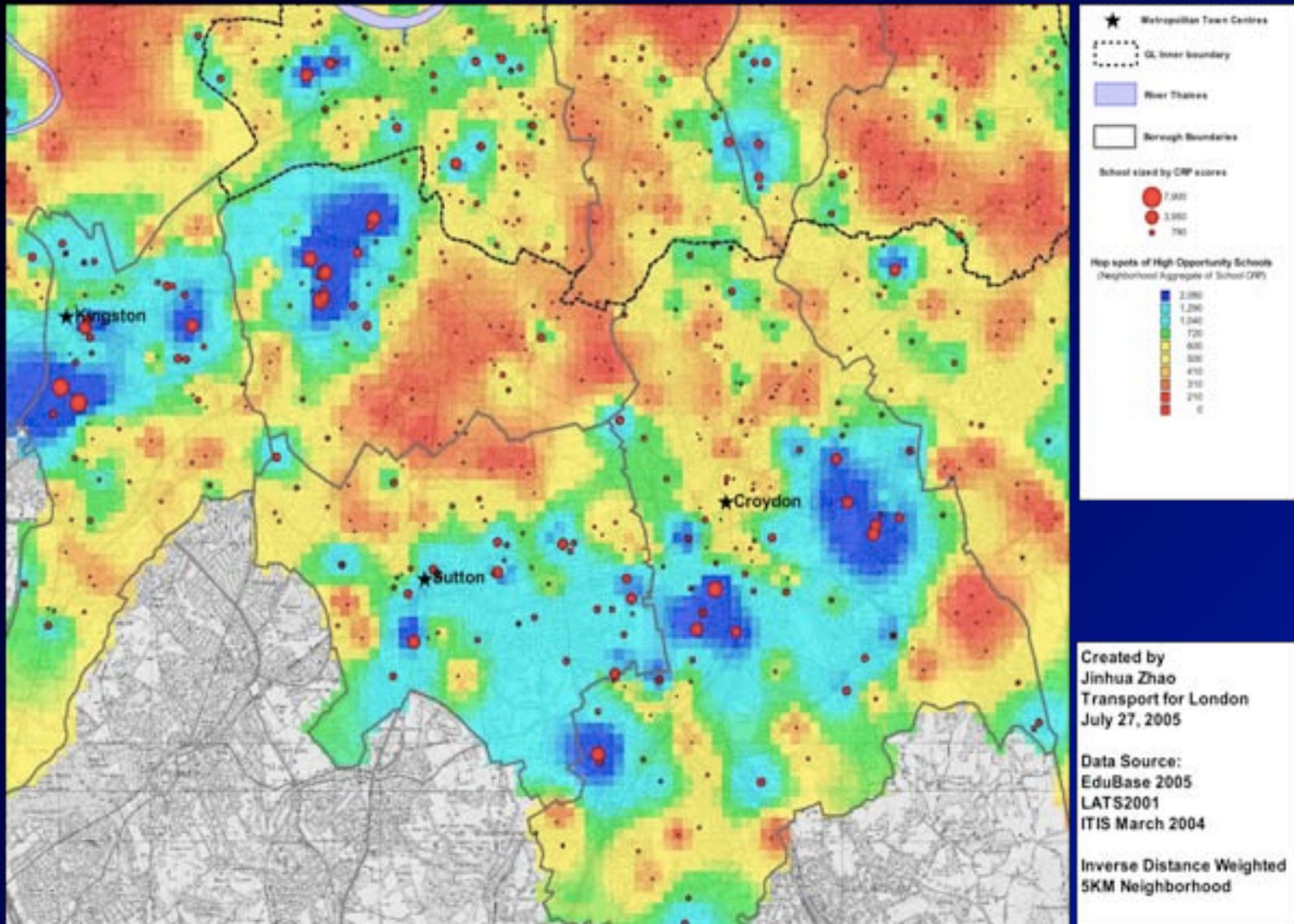
- Greater than 2
- 1.5 to 2
- 1 to 1.5
- Less than 1
- No Data

Data Source:  
ITIS March 2004  
EduBase  
LATS 2001

CRP Calculated by  
the Author  
July 25<sup>th</sup>, 2005



# By trip and by location



# Conflicts ?

- **Road Safety**
- **Accessibility**
- **Sustainability**
- **Business case**
- **Public acceptance**



**7% reduction  
in congestion  
by 2016**

